

ACEWASH



Factory 1

19# Dongsha Changfu Road, Nanfeng Town, Zhangjiagang City, Jiangsu Province, China.



Factory 2

7# Yuefeng road, Nanfeng town, Zhangjiagang city, Jiangsu province, China.

International Sales Department:

B1705, Building A, Huijin Business Center, Yangshe Town, Zhangjiagang City, Jiangsu province, China.

Suzhou Acewashtech Machinery Co., Ltd. Member of ACERETECH

Tel: +86-512-58622011 | Fax: +86-512-58622013 | E-mail: info@acewashtech.com

EPI
Filtration Systems
Polymer Filter

mcpa
RECYCLING TECH
Shredder • Crusher

ACERETECH
RECYCLING & PELLETIZING
Recycling • Pelletizing

TAIWAN MATILA
FILM BLOWN MACHINERY
Film blowing • Die head



ACEWASH

Member of ACERETECH

The most suitable plastic recycling solution supplier for you.



www.acewashtech.com

Acewashtech Machinery Co., Ltd



EFFICIENT WASHING, BETTER RECYCLING

03 >	Washing Line		
	Washing Line for PET Bottle—Food grade/Bottle to Bottle	03/04	
	Washing Line for Plastic Film/Jumbo Bag/Woven Bag	05/06	
	Washing Line for ABS/PS/PP from WEEE waste	07/08	
	Washing Line for HDPE/PP—Food Grade	09/10	
	Electrostatic Sorting System for PE/PP/ABS/PS	11/12	
13 >	Pelletizing System		
	Bottle to Bottle Food Grade Pelletizing System	13/14	
	Pelletizing Line for PE/PP/ABS/PS/EPS/EPE etc.	15/16	
17 >	Water Treatment		
	Waste Water Treatment System	17/18	
19 >	Recycling & Washing Machine		
	Crusher Machine	19	
	Shredder Machine	20	
	Label Remover	21	
	Sink Float Tank	22	
	Friction Washer	23	
	Centrifugal Dewatering Machine	24	
	Pre-Washer	25	
	Spray Washer(Cold Water & Hot Water)	26	
	Screw Compactor	27	
	Squeezer Machine	28	
	Six-Channel Lable Separator	29	
	Trommel	30	



ACEWASH

Washing Line for PET Bottle—Food grade/Bottle to Bottle

(1000-6000 kg/h)

PET Bottle to Bottle Turnkey Solution: Washing Line +LSP system +SSP system.
Customize the recycling system based on the situation of the raw materials to meet FDA standard.



◀ PET bottles



◀ PET bottle flakes

Product Parameters

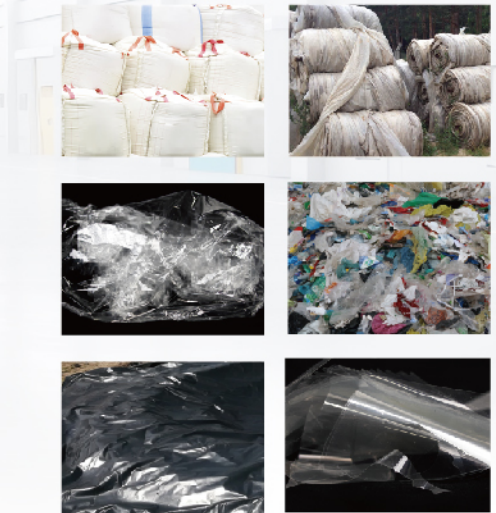
Model	Capacity (KG/H)	Installation Power (KW)	Steam (KG/H)	Water Consumption (T/H)	Space (M ²)
PET 1000	1000	385	500	2-3	1200
PET 2000	2000	520	800	4-6	1400
PET 3000	3000	720	1000	6-8	2200
PET 6000	6000	1180	1600	10-12	2600



ACEWASH

Washing Line for Plastic Film/ Jumbo Bag/Woven Bag

(500-2000 kg/h)



Product Parameters

Model	Capacity(KG/H)	Installation Power(KW)	Water Consumption(T/H)	Space (M ²)
AWTS 500	500	250	0.5-0.7	260
AWTS1000	1000	420	1.1-1.8	500
AWTS 2000	2000	620	3.5-4.2	800



Suitable for different kinds of soft plastic materials (Packing film,PP jumbo bag,PP woven bag,PP fishnet), are able to separate high density and dirty materials.



Plastic will get high speed friction around 720rpm and sticky material and heavy sediments will be rubbed off efficiently.



Final Moisture can be around 5%~8% in the end,totally suitable for pelletizing Line of our own brand.



ACEWASH

Washing Line for ABS/PS/PP from WEEE waste

(500-6000 kg/h)



ACEWASHTECH team has many years of research and development experiences of inhousehold appliance cleaning and recycling lines and has designed washing and recycling solutions for washing, separating, and drying plastic and electronic equipment waste.

The WEEE recycling line is developed by using density separation (salt water) to achieve high purity PS and ABS materials with consistent performance.



Product Parameters

Model	Capacity(KG/H)	Installation Power(KW)	Water Consumption(T/H)	Space (M ²)
AWTF 500	500	110	0.5-1	200
AWTF1000	1000	180	1-2	300
AWTF 2000	2000	220	2-4	400
AWTF 3000	3000	260	4-5	500
AWTF 6000	6000	540	7-10	750



ACEWASH

Washing Line for HDPE/PP—Food Grade

(500-3000 kg/h)



↑ 95% More than 95% recycling with different functions

Suitable for different kinds of Hard/Rigid plastic materials (HDPE Bottle, Containers, PP injection product, Engineering plastic, Home-consumer plastic, etc).

As machine installed VOC Dehumidification, drying system, sorting system, this kind of flakes meets the standard of FDA which is available to contact food packing. Less than 1-3% moisture, the material is suitable for high quality pelletizing.



Product Parameters

Model	Installation Power (KW)	Space (M ²)	Number of People	Water Consumption (T/H)	Steam Consumption (KG/H)
500	190	350	4-6	2-4	300
1000	270	400	4-7	2-4	300
2000	350	450	6-10	4-6	350
3000	480	600	6-12	6-8	500



ACEWASH

Electrostatic Sorting System for PE/PP/ABS/PS

(500-6000 kg/h)



Product Parameters

Model	Capacity(KG/H)	Installation Power(KW)	Space (M ²)
AWTE 500	500	150	200
AWTE1000	1000	200	350
AWTE 2000	2000	350	450
AWTE 3000	3000	480	500
AWTE 6000	6000	780	800

- Improving the sorting efficiency of plastic scraps,efficiently separation of silicone, rubber, spinge, PU and other elastomer impurities.
- Raw material request: size 3~25mm, humidity< 5%.
- Sorting purity: ABS≥98%,PS≥98%,PE and other material ≥95%.



ACEWASH



safPET

Bottle to Bottle Food Grade Pelletizing System



The latest efficient recycling solution, the vacuum technology, the SSP IV increasing technology, and the pelletizing extruder, make the IV value of the final PET granules can meet the requirements, and this value can be stably maintained. Even there are uneven IV values and moisture content of the raw materials, the final pellets can be maintained at a reasonable, qualified IV value within a set interval. Meanwhile the quality and the output are always stable. It can maintain a stable IV value output for further downstream processing and molding such as stretch blow molding, up to 100% bottle-to-bottle technology in new bottles.

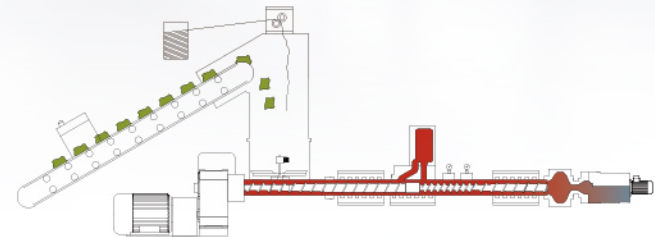
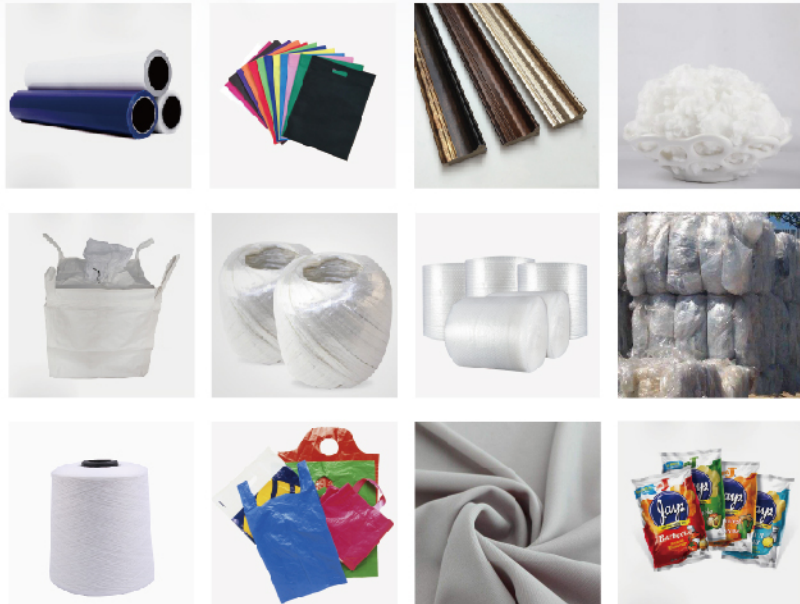
PET SSP





ACEWASH

Pelletizing Line for PE/PP/ABS/PS/EPS/EPE etc.



Excellent degassing and filtering performance for recycling

The ACS-Pro is the totally new standard recycling and pelletizing system with optimized super long L/D ratio, filtering ahead of vacuum degassing, specially suit to the waste plastics such as high contaminated and heavily printed recycling and pelletizing.

The drive of compactor is controlled by inverter, together with sliding gate device installed on the outlet of compactor room, to guarantee ACS-Pro not only handle losing material recycling but also rigid regrinds material re-pelletizing.



ACEWASH

Waste Water Treatment System

Waste water treatment system is an efficient, environmental friendly and sustainable solution, designed to treat wastewater, and turn it into a valuable resource. The system includes wastewater collection, pre-treatment, treatment, disinfection and recycling.

Efficient

Our systems are able to process large volumes of wastewater quickly, and saving time. High level of automation, automatic proportioning of chemical agent concentration, constant temperature heating of the system.



Economical

By recycling waste water, cleaning cost is reduced and economic benefits are improved. Without adding any chemical reagents, the recovery of chemical reagents can be realized, reduce the use of chemicals.

Environmental friendly

Reduce waste water discharge, protect the environment and achieve sustainable development. Wastewater reuse, reducing water consumption and wastewater treatment costs.

On-line recovery technology of brine and alkaline water

Through the online recovery technology of water treatment, 80% of the brine and hot alkaline water can be recovered for reuse.



Collection

We collect wastewater at source to ensure full recycling.

Pre-treatment

Remove impurities and pollutants in wastewater through a fine filtration system.

Treatment

Physical and chemical methods are used to remove suspended solids in water.

Disinfection

Kill bacteria and viruses in wastewater by using physicochemical methods.

Recycling

The treated water is regenerated and purified to meet recycling standard and reused for plastic washing line.

Product Parameters

Model	Capacity(M ³ /H)	Installation Power(KW)	Space (M ²)
AWT-W-6	6	15	90
AWT-W-12	12	30	150
AWT-W-20	20	32	200
AWT-W-30	30	65	400
AWT-W-40	40	72	450

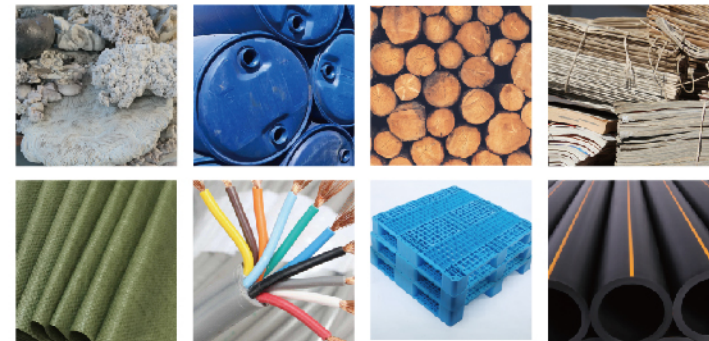


ACEWASH



Crusher Machine

- 20-40% Higher output and lower energy consumption.
- V-Shaped improves cutting recycling efficiency and reduces dust content in recycled material.
- Anti-wear plate and external bearing designed.



Shredder Machine

- 35% more space in the cutting chamber with V type rotor design.
- Low speed of 85 rpm ensures smooth running with high torque.
- Special design of rotor knife, knife holder, external bearing.
- Rotor surface hardened and wear-resistant.



Label Remover

- Mechanically stripping offer lables from bottles instead of by water to save water.
- Label removing efficiency to 90-95%.
- Add the protective net to the feed port to guarantee safe.
- Teeth type blades:Made by tungsten steel with copper welded, using life will be twice.

Sink Float Tank

- Paddle speed control by inverter.
- Big angle design for tank.
- Special deisgn for drain screw and slag belt to lift sink impurities.
- Safety hood is equipped to ensure safety standard.

Product Parameters

Model	Capacity(KG/H)	Dimension(MM)	Power(KW)
LR500	500	4260(L)×2490(W)×3475(H)	14.0
LR1000	1000	5475(L)×3122(W)×3680(H)	20.5
LR2000	2000	6354(L)×3247(W)×3940(H)	37.5
LR3000	3000	6123(L)×1600(W)×2865(H)	55.0

Product Parameters

Model	Qty of Roller(PCS)	Tank Width(MM)	Dimension(MM)	Power(KW)
SFW1200	4	1200	7200(L)×1580(W)×3680(H)	6.05
SFW1500	8	1500	8700(L)×1870(W)×3680(H)	13.4
SFW1800	8	1800	8700(L)×2200(W)×3680(H)	15.0



ACEWASH



Friction Washer

- Speed control device.
- Special design for blade of main shaft.
- Anti-wear steel for blade of main shaft.
- Self-cleaning device for mesh.
- Laser processes for mesh holes.

Product Parameters

Model	Capacity(KG/H)	Dia of Rotor(MM)	Shaft Speed(RPM)	Power(KW)
FW-410	500-600	410	720	11.0/15
FW-450	600-800	450	720	18.5/22
FW-560	1000-1200	560	720	30
FW-630	1500-2000	630	720	37

Centrifugal Dewatering Machine

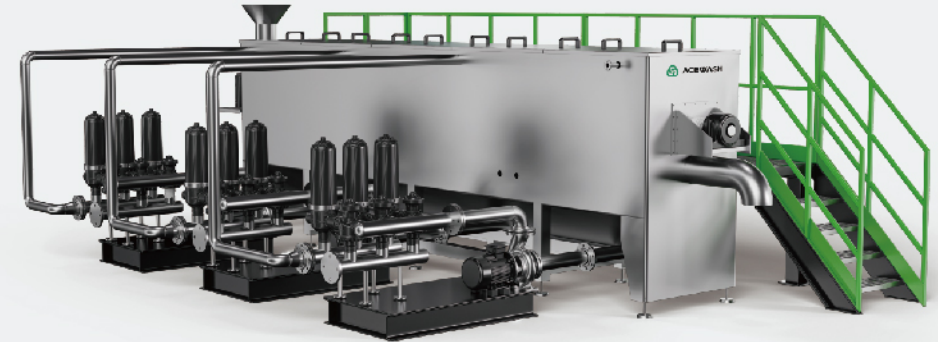
- Heavy duty shaft, exchangeable blades with wear-resistant layers.
- Airpipe cleaning device.
- Special design for blade degree to meet different material.
- Three layers sealing prevents water from bearing.

Product Parameters

Model	Capacity(KG/H)	Dia of Rotor(MM)	Width of Rotor(MM)	Power(KW)
HCD-400	300-500	400	1000	11/15
HCD-540	1000-1500	540	1000	22/30
HCD-660	2000-3000	660	1400	37/45
ACD-900	800-1000/soft material	910	1600	90
ACD-1200	1000-1200/soft material	1200	1600	110



ACEWASH



Pre-Washer

- Low water consumption, 95% recycled-release.
- Simple water treatment.
- Active material washing processes.
- Self-cleaning device for tank wall.

Spray Washer(Cold Water & Hot Water)

- Equipped with water recycling system.
- More effective for hot water spray than cold water.
- The speed of screw is adjustable by inverter.
- Enforced spray could make impurities removing better.

Product Parameters

Model	Capacity (KG/H)	Dia of Rotor (MM)	Shaft Speed (RPM)	Power(KW)
SW-1000	1000	580	760	45
SW-2000	2000	750	760	55

Product Parameters

Model	Installation Power(KW)	Circulation Dose(M ³ /H)	Circulating Pump Power(KW)
SW800	7.5	20	4
Rotor Diameter	Effective Working Length(MM)	Overall Dimension(MM)	Processing Capacity(KG/H)
Φ800	5500	7627(L)×4489(W)×2280(H)	1000/2000/3000/5000



Screw Compactor

- Final product moisture will be 5-10%.
- New design for double-shaft disintegrator, low power, high capacity, easy operation.
- Heavy duty gearbox and bearing parts to provide high torque import.

Squeezer Machine

- Final product moisture will be 5-10%.
- Heavy duty gearbox and bearing parts to provide high torque import.
- It has the characteristics of high efficiency and energy saving.
- The equipment could replace the dehydrator and dryer in the whole cleaning production line.

Product Parameters

Model	Capacity(KG/H)	Dia of Rotor(MM)	Motor power(KW)	Final Product Moisture
JG390	500-800	390	22	8% film
JG490	1000-1500	490	45	8% film

Product Parameters

Model	Capacity(KG/H)	Dia of Rotor(MM)	Final Product Moisture	Power(KW)
NG-320	550 (PP) -750 (PE)	320	2-7%, semi-plasticization	148.6
NG-350	800-1000	350	2-7%, semi-plasticization	176.6



ACEWASH



Six-Channel Label Separator

- Add the bracket and hooks for convenient collection.
- Six channels separation ensures label separation rate >99.5%, dust <1%.
- Unique “Z” structure design with dust filter.
- Material outlet is equipped with magnetic rack (as an option) to remove tiny magnetic metal.
- Screen can be equipped to subdivide flake size into 0-1.5mm, 3mm and 3-12mm.

Product Parameters

Model	Capacity(KG/H)	Removal Lable Rate	Dimension(MM)	Power(KW)
LS1000	500-1000	15-20%	1656(L)×1155(W)×5030(H)	6.6/8.6
LS2000	1000-2000	15-20%	2600(L)×1166(W)×5260(H)	8.6/14
LS3000	3000-4000	15-20%	4400(L)×3800(W)×6700(H)	32.6

Trommel

- Function: remove stone, dust, loosen caps and small metal.
- Basis material: Galvanized carbon steel.
- Frame: Carbon steel.

Product Parameters

Model	Dia of Barrel(MM)	Length(MM)	Motor Power(KW)	Hole Dia(MM)	Basic Material of Belt
RMS1000	1000	4500	3	50	PVC
RMS1500	1500	5000	5.5	50	PVC
RMS1500	1500	6000	5.5	50	PVC
RMS1800	1800	8000	7.5	50	PVC